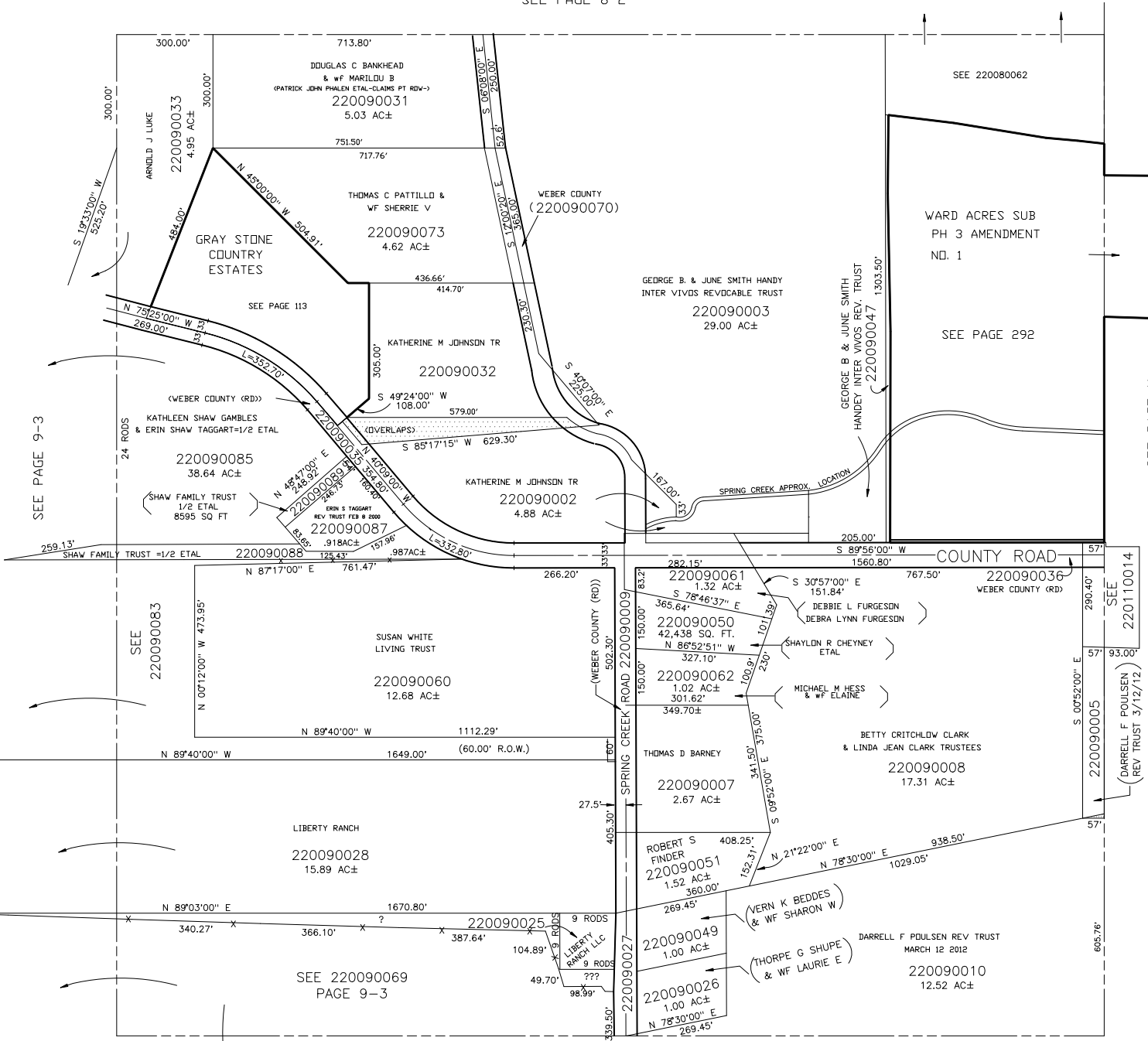


N.E. 1/4
SECTION 19, T7N., R.1E., S.L.B. & M.

LIBERTY DISTRICT
SCALE 1" = 200'

TAXING UNIT: 36

SEE PAGE 8-2



SEE PAGE 9-3

SEE 220090083

SEE 220090069
PAGE 9-3

SEE PAGE 9-1

SEE PAGE 11

SEE 220110014

SEE 220090005
(DARRELL F POULSEN
REV TRUST 3/12/12)